

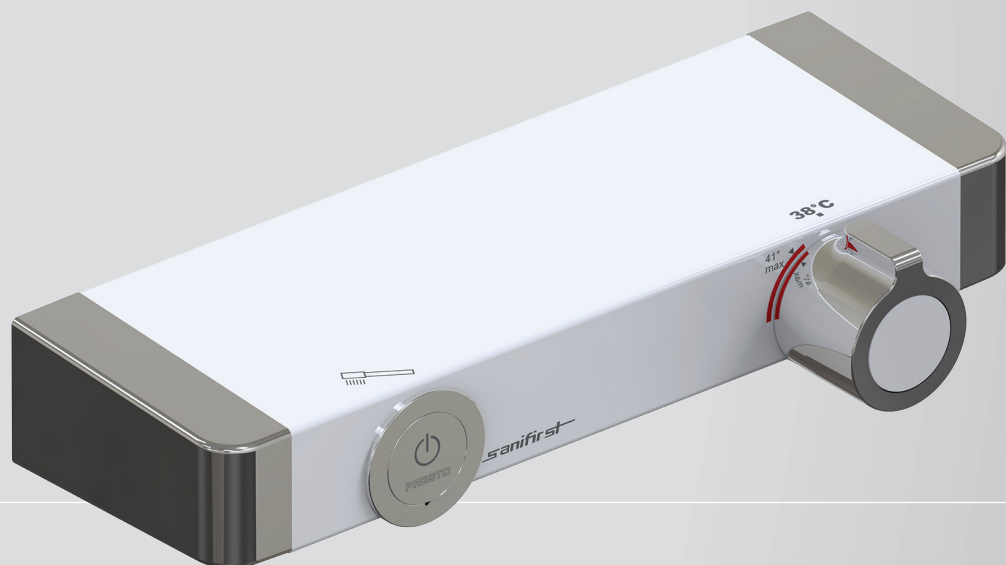
sanifirst

PRESTO[®]
loves water

MASTERMIX[®]

New generation of thermostatic mixers

CONTROL THE RISKS
OF BURNS AND INFECTION
WITH MASTERMIX[®]
TECHNOLOGY



MasterMiX[®]

FRENCH TAPWARE
FOR INTENSIVE USE AND
CHALLENGING ENVIRONMENTS

LOVE WATER SAFELY

NEW GENERATION OF SANIFIRST® THERMOSTATIC MIX

BENEFITS

Protects against bacterial growth:
no check valves, which are often the source of DHW/DCW intercommunication, and internal smooth body.

Protects against burns:
cold body.

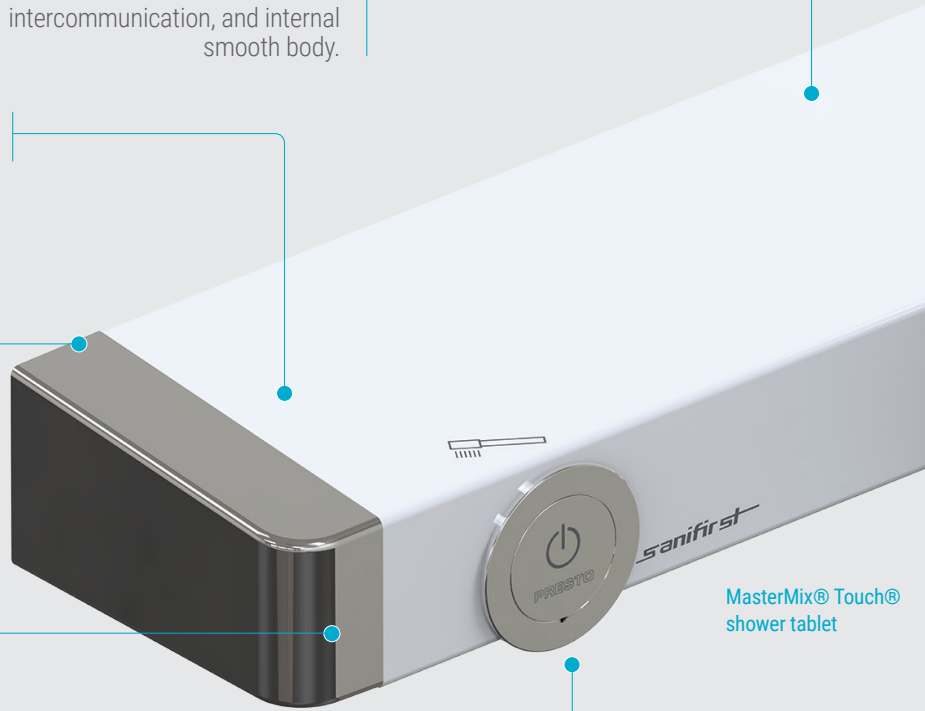
Easy installation:
«Plug & Play» mounting plate.



Easy cleaning:
no nooks or non-accessible areas.

Easy to use:
a simple light touch activates or stops the water flow. Suitable for mobility-impaired and children.

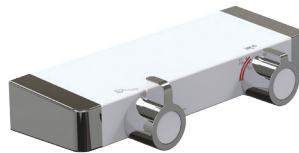
MasterMix® Touch® shower tablet



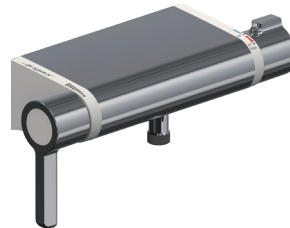
PANORAMA



PRESTOTEM® 2 TOUCH®



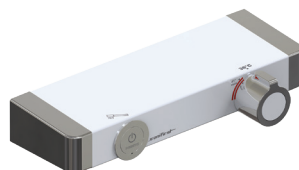
Mechanical shower tablet - downward outlet



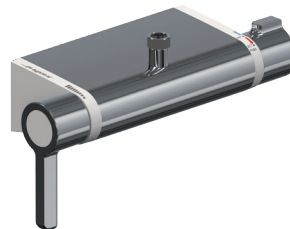
Wall-mounted version - downward outlet



Single-hole version - dual control



TOUCH shower tablet - downward outlet



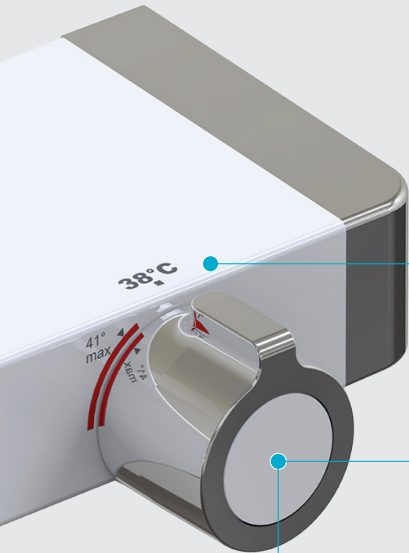
Wall-mounted version - upward outlet



Single-hole version - with pull-out spray shower head

ERS

MasterMiX®



Protects against burns:
dual temperature limiters
38°C - 41°C.

Protects against burns:
safety thermal shock.

Easy maintenance:
the cartridge can be replaced
without shutting off the water
supply.

FOR WHICH AUDIENCE?

The MasterMix® is designed for healthcare establishments and facilities for the elderly or young children:

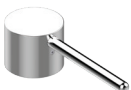
- Hospitals
- Clinics
- Nurseries
- Maternity units
- Nursing homes
- Retirement homes
- ...



Downward spout



Upward spout



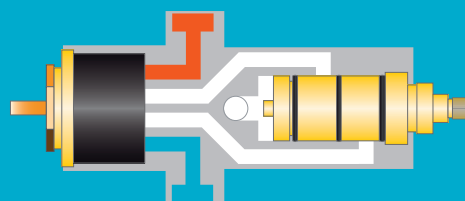
Ergonomic flow rate lever

Accessories

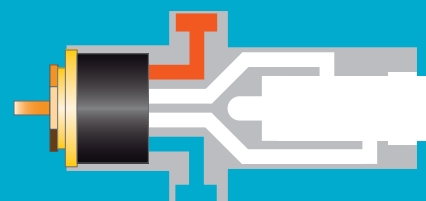
MASTERMIX® PATENT

**CSTB*
VALIDATION**

A dual securing of the users thanks to unique anti-scalding and anti-bacterial proliferation systems.



Mixer in closed position
NO RISK OF CROSS-CONNECTION



Removable cartridge
**NO NEED TO SHUT-OFF THE WATER
SUPPLY**

* Scientific and Technical Centre for Building

MECHANICAL SHOWER TABLET
Downward outlet



SHOWER RANGE

<i>Designation</i>	<i>Flow rate</i>	<i>Ref.</i>
PRESTOTEM® 2 MasterMix® dual control with hand-held shower	8 l/min at 3 bar	88856
PRESTOTEM® 2 TOUCH® MasterMix®	6 l/min at 3 bar	88858
PRESTOTEM® 2 TOUCH® MasterMix® with hand-held shower	6 l/min at 3 bar	88860
PRESTOTEM® 2 MasterMix® with dual control and reverser	8 l/min at 3 bar	88866
Mechanical shower tablet - downward outlet	Factory setting: 9l/min at 3 bar	75708
TOUCH shower tablet - downward outlet	8 l/min at 3 bar	75710
Wall-mounted version - downward outlet	Factory setting: 9l/min at 3 bar	75700
Wall-mounted version - upward outlet	Factory setting: 9l/min at 3 bar	75702

ACCESSORIES

Downward spout - projection 200 mm	75704
Upward spout - projection 125 mm	75705
Ergonomic flow rate lever - length 120 mm	75706

WASHBASIN WITH THERMOSTATIC MIXERS

Wall-mounted version - Downward outlet and spout, ergonomic flow rate lever.
For washbasin or scrub-up trough



WASHBASIN RANGE

<i>Designation</i>	<i>Flow rate - Factory setting</i>	<i>Ref.</i>
Wall-mounted version - downward outlet	9l/min at 3 bar	75700
Wall-mounted version - upward outlet	9l/min at 3 bar	75702
Single-hole version - dual control	9l/min at 3 bar	75712
Single-hole version with pull-out spray shower head	9l/min at 3 bar	75714
Single-hole version with pull-out spray shower head with smooth black hose	9l/min at 3 bar	75731

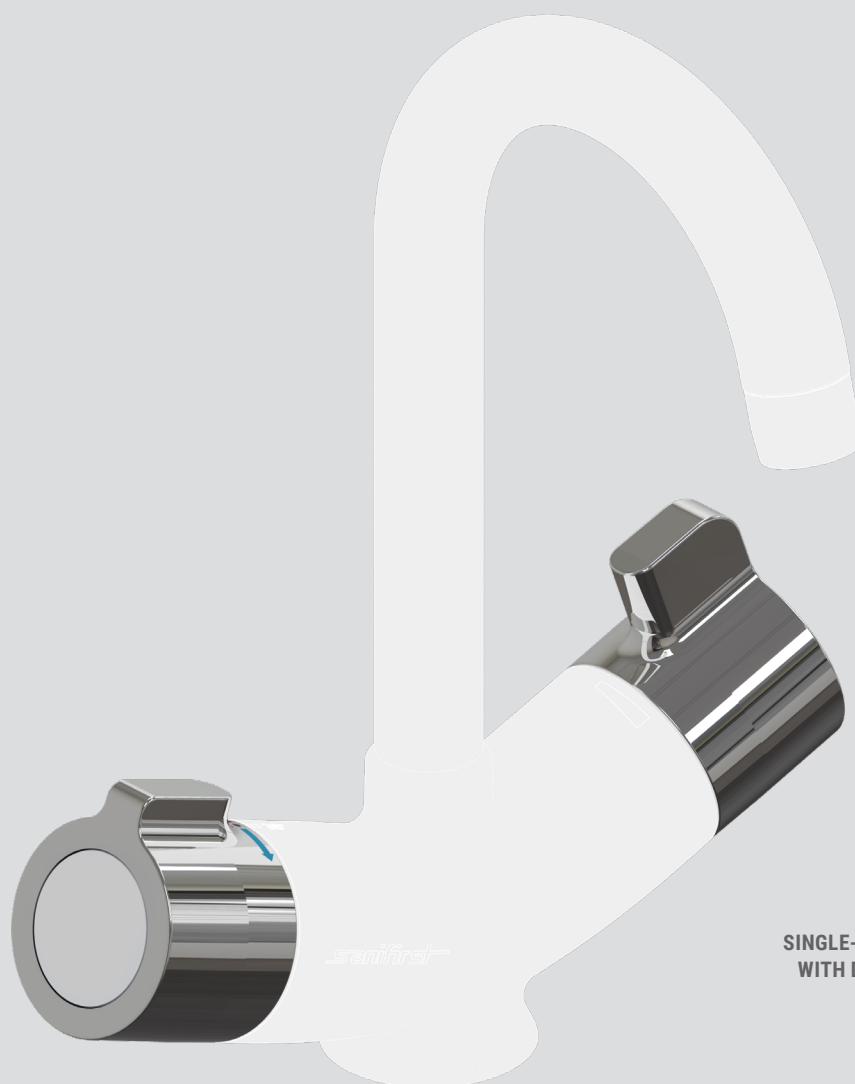
ACCESSORIES

Downward spout - projection 200 mm	75704
Upward spout - projection 125 mm	75705
Ergonomic flow rate lever - length 120 mm	75706

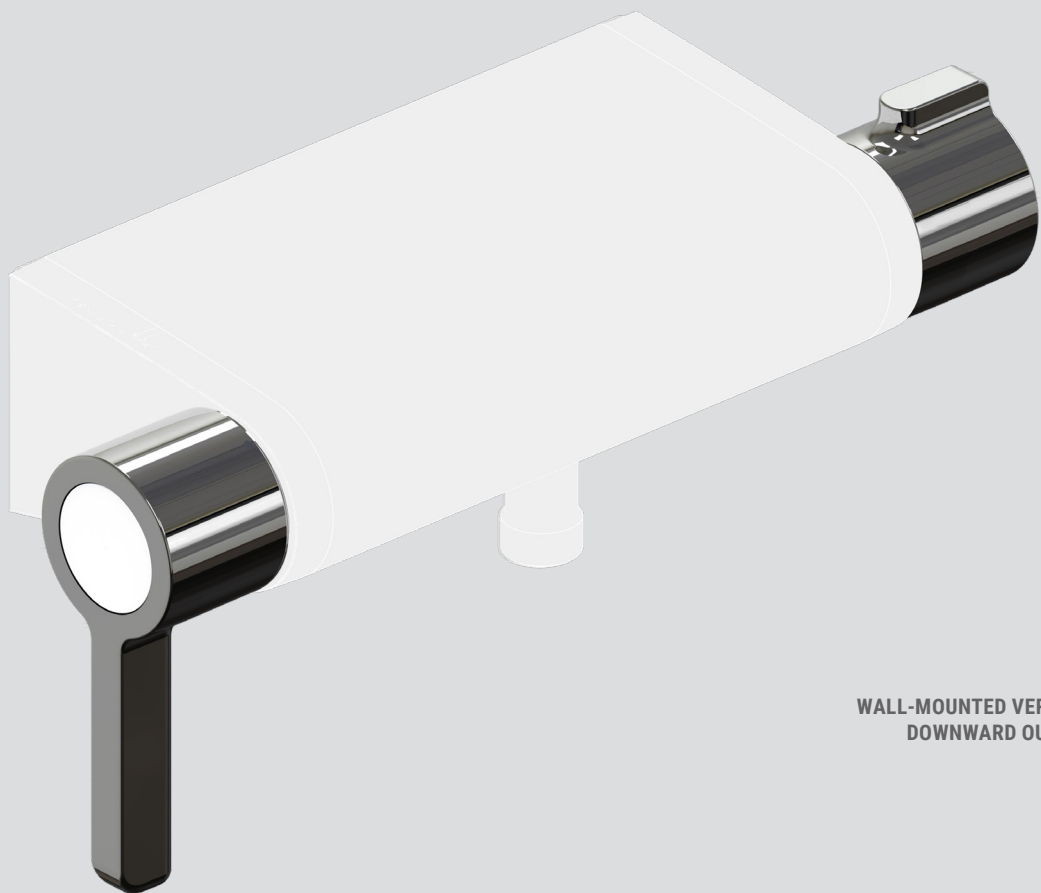
The new generation of SANIFIRST® thermostatic mixers makes use of unique patented MasterMix® technology, which **limits the risks of burns and infection** for both patients and care workers.

Now available as a whole collection:

- **washbasins** (with or without pull-out spray shower head)
- **wall-mounted showers** (top and bottom outlet)
- **shower tablets** (mechanical and TOUCH® sensitive)
- PRESTOTEM® 2 **shower panels** (mechanical and TOUCH® sensitive)



SINGLE-HOLE VERSION
WITH DUAL CONTROL



**WALL-MOUNTED VERSION
DOWNWARD OUTLET**



www.prestobim.com

PRESTO

LES ROBINETS PRESTO S.A.

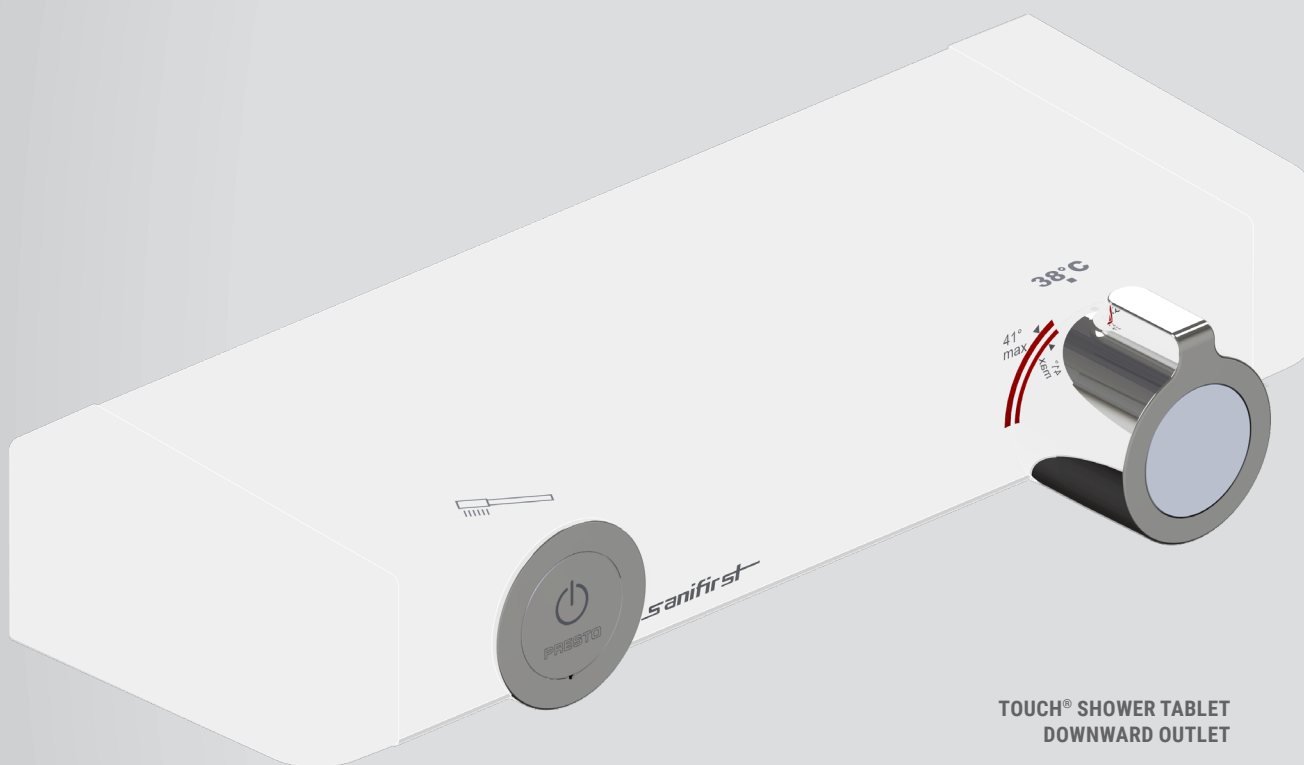


7, RUE RACINE
92542 MONTRouGE CEDEX - FRANCE
Tel.: +33 (0)1 46 12 34 56 | Fax: +33 (0)1 47 35 69 82
Email: adv.export@presto.fr
www.presto.fr | www.presto-group.com

SANIFIRST

A PRESTO Group brand

47, IMPASSE DES CHAGNES
16160 GOND-PONTOUVRE - FRANCE
www.sanifirst.com



**TOUCH® SHOWER TABLET
DOWNWARD OUTLET**



FIND OUT MORE
ABOUT MASTERMIX®
MIXERS RANGE

Photos credits: © spotmatikphoto, © Piotr Marcinski, © WavebreakMedia, © Yuri Arcurs,
© Tyler Olsen - Fotolia / © tverdohlib - Adobe Stock
Code Z555.7-01 - Edition January 2020